

## Earlsburn Wind Farm Extension

### Introduction

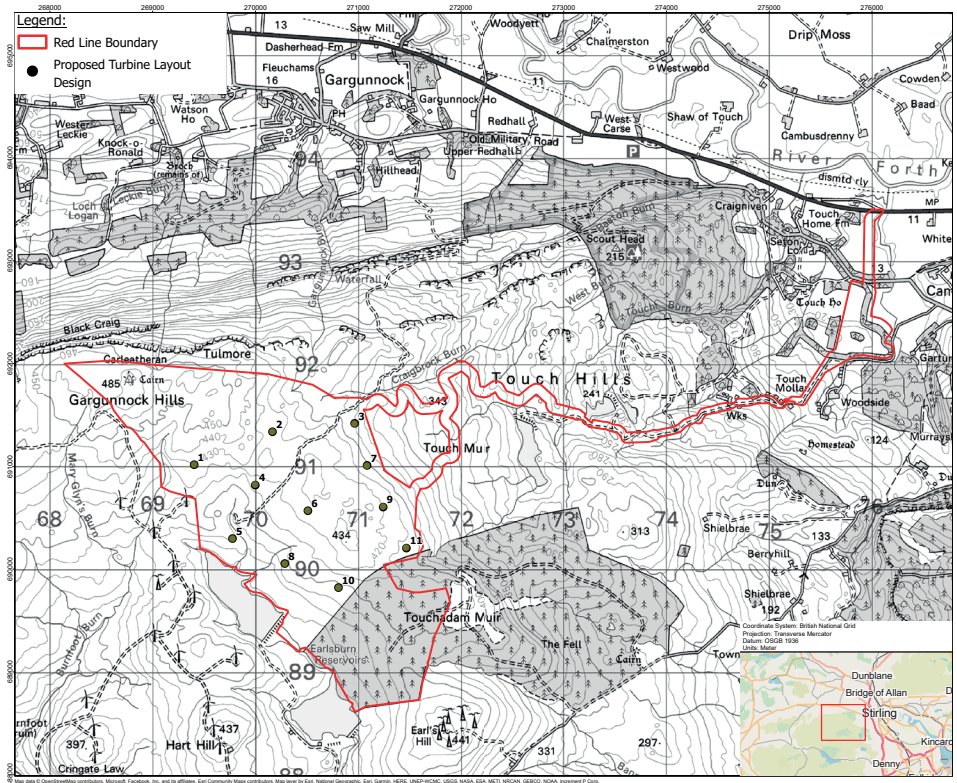
The Earlsburn Wind Farm Extension is a joint venture between two well-established companies who together have set up a development company - Naturalis Energy Developments Ltd - to develop a portfolio of UK onshore wind and solar assets.

We have been assessing the potential for a windfarm, located 4km to the south of Gargunnock and adjacent to the existing Earlsburn wind farm site. The current layout of 11 turbines has the potential to generate clean, green electricity that could meet the demands of nearly 45,000 households\*.

### Public Exhibition

We held initial public exhibitions introducing our proposals in Gargunnock and Cambusbarron in June in addition to engagement with local communities and other stakeholders. We will be arranging two further public exhibitions to be held in Kippen and Fintry to allow communities the opportunity to examine the new plans.

The display boards from the first public exhibitions and details about upcoming events are available at our project website: [www.earlsburnextension.co.uk](http://www.earlsburnextension.co.uk)



**SITE LAYOUT PLAN**

### Project update

Following feedback from the public exhibitions and discussions with stakeholders and the results of the studies we are undertaking we have made changes to the project. The wind farm design continues to evolve but the major change at this stage is a reduction in the number of turbines from 15 to 11 which will reduce turbine visibility from some areas and allow for a greater distance between turbines and nearby homes.

The Site Layout Plan shows the preferred access route into the Site off the A811. This would require a new left-hand turn off the A811 for a temporary period of around 2 months, used only for the transportation of turbine components. For construction we intend to use stone from a number of borrow pits on site which we have identified. This would significantly reduce construction related transport movements.

\*This is a very conservative estimate, based on a Department of Business, Energy and Industrial Strategy (BEIS) (onshore wind) average load factor of 26.46% and using the most recent statistics from the BEIS Strategy showing that annual UK average domestic household consumption is 3.748 MWh (as of December 2021, updated annually). The predicted load factor for Earlsburn Extension has been calculated at 39.6%, so homes powered equivalent is estimated to be a far greater number.

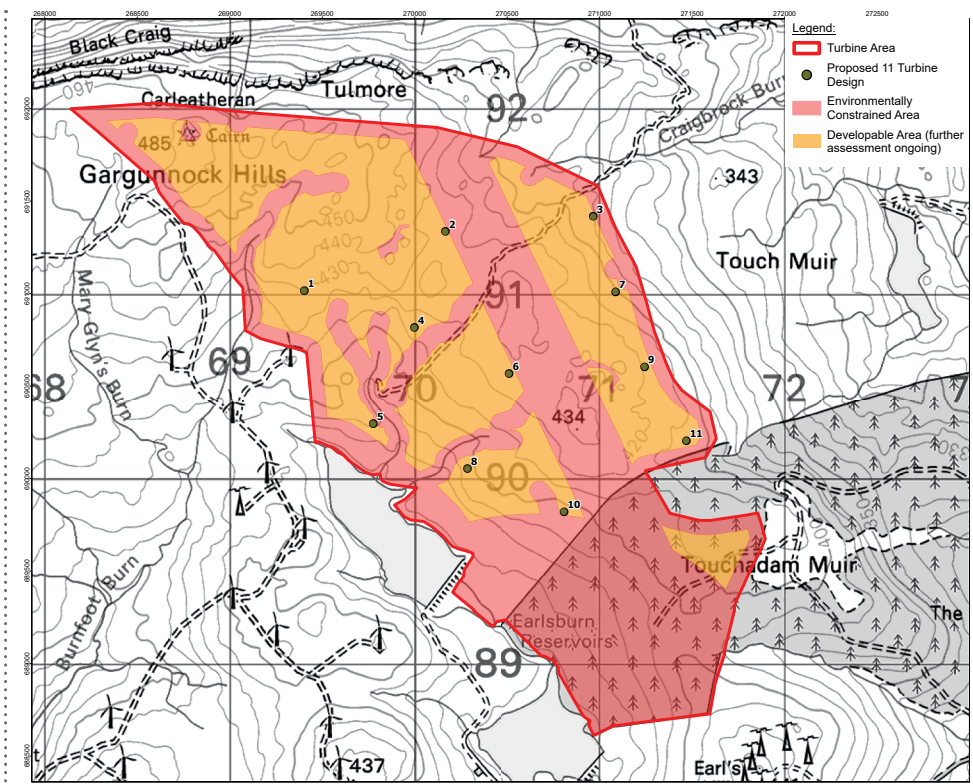
## Site Constraints

The red areas shown on the HeatMap are areas which are less suitable to position turbines because of environmental constraints. These constraints include proximity to watercourses and ecological habitats and features, avoidance of deep peat and archaeology, noise constraints and site topography (such as steep slopes). A larger detailed version of the plan showing all these constraints will be available at forthcoming exhibitions and on the project website.

## Community Benefit Package

If the wind farm is approved, the developers will offer a community benefit scheme built around suggestions from the local community. We are very flexible in terms of how the benefit package could be used and we want the community to decide what types of projects/initiatives it would like the fund to be used for. For example it could be used for supporting the creation of green jobs and apprenticeships, helping local entrepreneurs, improving energy efficiency to reduce bills and carbon footprints, improving local connectivity and transport links and creation of new or improved community spaces.

We will also create a supply chain plan for the construction phase and beyond in the event that consent is granted, to further support local businesses, innovation



HEAT MAP CONSTRAINTS PLAN

activities, skills initiatives and infrastructure and how this plan can best work for the area and region.

### What next?

The project team will remain responsive to public feedback on the proposals and we invite members of the community to attend the upcoming public exhibitions, make their views known via their local community council or feedback directly to the project team via the website (an online feedback form is available).

We will also continue our discussions with local community councils and others around the community benefit package.

The next public exhibitions for the project will be held on Wednesday 21 September

2022. We will have a number of photomontages on display which will show what the wind farm would look like from a number of different locations as well as the results of our ongoing environmental studies.

### Public exhibitions Wednesday 21 Sep 2022

The following times and locations of the exhibitions:

**11am - 3pm**  
Kippen Village Hall, Fore Road, Kippen, Stirling, FK8 3DT

**4pm - 8pm**  
Menzies Hall, Main Street, Fintry, G63 OXE